

WEAR RED

and donate to
Rainbow Trust

RAINBOW TRUST

SUPPORTING FAMILIES
WITH A SERIOUSLY ILL CHILD



ILC



Scan me
to donate



rainbowtrust.org.uk/ILCdonate

WHAT IS ILC DAY ?



SUPPORTING FAMILIES WITH A SERIOUSLY ILL CHILD

Each year on February 14th, ILC brings together the insurance claims industry to raise money for Rainbow Trust Children's Charity. Organisations are encouraged to wear red, donate to Rainbow Trust and commit to raising vital funds.

ILC Day helps to change the lives of families with a seriously ill child. To date, the ILC insurance claims community has raised an extraordinary **£1.3m** for Rainbow Trust and ILC has set a target of furthering that by £20,000 for ILC Day 2025.



rainbowtrust.org.uk/ILCdonate

INTRODUCING RAINBOW TRUST ...

Rainbow Trust is the leading organization providing emotional and practical support to families who have a child with a life-threatening or terminal illness.

Learning that your child might die is devastating. Often families struggle to cope, most becoming overwhelmed with worry and grief, leading to feelings of anxiety, isolation, and depression. Rainbow Trust's Family Support Workers offer a lifeline to struggling families. They are there for the entire family, from diagnosis through to bereavement, helping to ensure that no family goes through the loss of a child alone.

**RAINBOW
TRUST**

SUPPORTING FAMILIES
WITH A SERIOUSLY ILL CHILD



“When you are told that your child has a condition that means they might die before you, you join a club that you didn't know existed. What you need is someone that has a map, has walked the route before and will walk with you until you don't need them any longer. That is what Rainbow Trust did for us.”

- A parent supported
by Rainbow Trust

rainbowtrust.org.uk/ILCdonate

HOW TO GET INVOLVED:

There are plenty of ways to get involved on ILC Day! ILC Day sees a whole host of fundraising events. Some ideas to get you started are below, but we welcome you to come up with your most creative ideas!

Wear red and donate to Rainbow Trust!



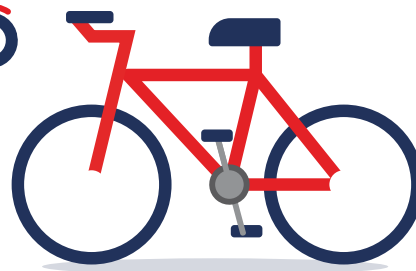
Valentine's Raffle - ask staff to donate valentine themed items and raffle them off.

Rainbow Play Date- Host an office play date and bring the kids to work!



Valentine's Bake Sale - Bake some treats and sell them to your colleagues

Get stepping, while dressed in red! Compete in a 24-hour steps challenge



Static Bike Cycle sponsorship - cycle the distance to one of Rainbow Trust's offices



Join ILC for a live quiz on ILC Day!

By fundraising on ILC day you could be added to ILC'S Wall of Love!

The Wall of Love - a symbol of the industry's support - highlights the logos of those organisations that have pledged to raise over £250 for Rainbow Trust. Sign up and pledge to join the wall!

ILCDAY 2024 Wall of Love

ILC
iloveclaims.com
Wednesday 14 February 2024
#ILCday

rainbowtrust.org.uk/ILCdonate

SUPPORTING YOUR FUNDRAISING:

To help you with your fundraising, we have a range of brightly coloured materials that can be downloaded at the link below. This includes:

- ♥ Posters
- ♥ Valentine's Bunting
- ♥ Compliment-a-colleague card
- ♥ Cake Labels
- ♥ Coin Box
- ♥ Email Banner



Should you wish to wear a Rainbow Trust T-shirt on the day, please get in touch with katherine.burgess@rainbowtrust.org.uk to facilitate purchase.

Sign-up **HERE** to register for ILC Day 2025 and download your fundraising materials!

PROMOTING ILC DAY:

Each ILC Day we aim to paint social media red by sharing the community's support for Rainbow Trust! By sharing your photos, we hope to give maximum exposure to the organisations taking part, all while raising awareness for Rainbow Trust.

Get involved by:

- Following Rainbow Trust and ILC on LinkedIn
- Using the hashtag **#ILCDay2025**
- Sending over your photos to katherine.burgess@rainbowtrust.org.uk throughout the day.

HOW YOUR SUPPORT HELPS FAMILIES

RAINBOW TRUST

SUPPORTING FAMILIES
WITH A SERIOUSLY ILL CHILD

£15 could cover the cost of a day out, such as going to the cinema or bowling, for a sibling of a seriously ill child who just wants to have some fun

£30 would pay for an hour's practical and emotional support for a family caring for a seriously ill child, helping them make the most of their precious time

£120 can pay for a month's bereavement support

£1,000 is the average cost of support for a family with a seriously ill child for six months.



↑ Evie, three, who has a condition that causes tumours to grow along her nerves, and Family Support Worker Cindy had fun being doctors and playing dress-up.



↑ Gabi, seven, invited Family Support Manager Natalie to attend her school nativity. Gabi's sister, Adriel, now 21 months old, just came out of hospital after six months of treatment.



↑ Logan-Ann, aged two, who has complex health needs, and Family Support Worker Laura had a trip to the park in Southampton. After two hours of fun, Logan-Ann slept in the car all the way home.



↑ Noah, four, and Family Support Worker Jen had fun exploring the Great North Museum. Noah, whose brother has complex health needs, has received sibling support for 18 months.



↑ After picking Louise, 14, who has sickle cell disease, and her brother Ethan, eight, up from school, Family Support Worker Jo played some drawing games with them. They couldn't stop laughing the whole time!

These are just some of the wonderful moments that your generosity and support are helping to create

Days out, playing, art and crafts are not just fun but allow the children to find ways to express their own feelings and to learn mechanisms to cope with their own or their brothers' and sisters' illness. This special time helps with their development, their communication and social skills, their wellbeing and self-esteem.

Family Support Workers can give the ill child and brothers and sisters some normality whilst providing parents with some respite.

Thank you for all you do for seriously ill children and their families.

rainbowtrust.org.uk/ILCdonate

PAYING IN DONATIONS:

Set up a JustGiving page -

This is a quick and simple way to get your money straight to us.

Set up a page at:

www.justgiving.com/campaign/ilc-day-2025

Transfer funds by BACS

Our details are below. Please ensure to reference your company name and ILC Day on the payment reference and send email confirmation of your payment to katherine.burgess@rainbowtrust.org.uk.

Rainbow Trust Children's Charity

Sort Code: 60-12-36

Account No: 26100681

Pay via our website

Pay in your money directly via the dedicated ILC Day website:

www.rainbowtrust.org.uk/get-involved/companies/ilc-day

Cheque

Please forward cheques, with a covering note to:

Katherine Burgess

Rainbow Trust Children's Charity

Cassini Court, Randalls Way

Leatherhead, Surrey

KT22 7TW

**RAINBOW
TRUST**

SUPPORTING FAMILIES
WITH A SERIOUSLY ILL CHILD



Scan me
to donate



Follow us:



Head Office address: Cassini Court,
Randalls Way, Leatherhead, Surrey KT22 7TW
Registered Charity No. 1070532.

rainbowtrust.org.uk/ILCdonate