



Our Impact

2012/2013

Support for families who have a
child with a life threatening or
terminal illness

Rainbow Trust

CHILDREN'S CHARITY



From our Chairman

Every year thousands of families caring for a child with a life threatening or terminal illness have to face the reality that their son or daughter may die before they reach adulthood.



The current economic climate is not making this difficult situation any easier. Many families find their finances suffer because a parent has to give up work to help care for their sick child, and welfare reforms are adding additional pressures to a household that is already feeling the strain. That is why services such as ours are so vital. By providing emotional and practical support, families can regain some sort of normality to their lives and an ability to cope with the long-term stress of caring for a seriously ill child.

We receive very little funding from the government to provide these services, just 3% of our income comes from statutory sources. As competition for funding becomes fiercer, it is increasingly difficult to secure this money, a situation that is compounded further still by changes to the health and social care system. The extensive reorganisation of the NHS, cuts to services and the localism agenda all combine to create a very uncertain future.

Despite these challenges, we continue to make an impact. This is through our renowned services direct to families and our first steps into a more campaigning mindset. We know, in the years to come, we must not just deliver outstanding services but we must also ensure that we campaign to create the best possible environment for those families that face the prospect of their child dying. We have started exploring this area and have building blocks in place thanks to our presence on a number of campaigning activities. This is a new aspect of our work, and one that we feel is essential if we are to raise the profile and needs of families with sick children. The building blocks are already in place thanks to our presence on a number of influential committees that work to shape national policy for children's care. These include: Together for Short Lives' Practice and Service Development Committee, the Children England Health Policy Group and The National Council for Child Health and Wellbeing. Our presence is to ensure that the needs of the families we support is not overlooked and that the contribution of social care to a child and their family's health and wellbeing is understood and fully recognised.

The support of our stakeholders is critical to our success and the Trustee Board would like to thank everyone who plays a role in our work – from the generous supporters who contribute with gifts of time and money, to the skilled professionals who maintain the high quality of our services, to the families who put their trust in us. We are determined to continue making a difference. With your help we can.

Gordon Tempest-Hay
Chairman, Rainbow Trust Children's Charity



Family Support

1,368 families supported around the country



Transport Support

882,000 miles driven by Family Support Workers to homes, hospitals, schools and play centres – almost the equivalent to driving to the moon and back twice!



Sibling Support

3,273 hours of sibling support, maintaining school attendance, arts & crafts, cinema trips, days out at the zoo, fun and laughter



Home Support

10,749 hours of home support, including emotional support, respite, countless meals cooked, baths run and storybooks read



Bereavement Support

851 hours of bereavement support for the entire family: parents, grandparents and siblings, face-to-face and over the phone, at any time of the night or day



Hospital Support

6,804 hours of hospital support, helping to organise appointments, explaining illnesses and treatment, looking after siblings and staying with sick children

Personal info



NAME:
Rainbow Trust
children's charity

Year founded:
1986

OUR VISION:
One day all terminally ill
children and their families
will have access to a
Rainbow Trust carer.

OUR MISSION:
To provide emotional and practical support
for families who have a child with a life
threatening or terminal illness.

OUR VALUES:

- We listen
- We work in an inclusive way
- We do the right thing

Welcome

Rainbow Trust has existed for over 26 years now and we're still constantly touched by the families we meet.

Our vision is that all terminally ill children and their families will have access to a Rainbow Trust carer. This year alone we have supported 1,368 families across the country, a number that is set to grow as we expand. For example, our ability to help more families was enhanced with the launch of a new Family Support Team in central London.

At Rainbow Trust we support the whole family and we were very pleased this year to launch a new Sibling Support Service called Me Too! funded by the Big Lottery Fund. This service will enhance the dedicated emotional, social and practical support we give to the siblings of sick children.

We can only do all we do thanks to our supporters and funders who kindly donated £4,236,597 through a variety of grants, corporate sponsorship, regular gifts, fundraising events and through our shops.

This report is a snapshot of the services we offer and the impact we make. As the family stories show even the smallest amount of support can make a really big difference.

In the coming year we will look at increasing the level of support we provide by introducing new projects, such as one focused on neo-natal care, and by expanding our team of Volunteers in Care. We are also exploring the possibility of launching a new Family Support Team.

Rainbow Trust exists because we believe that families with a terminally ill or life threatened child should not have to cope alone at their time of great need. All staff, volunteers and supporters have this goal and it is only through their dedication and continued help that we can be there for those families who need us.

Thank you

A handwritten signature in black ink that reads 'Heather Wood'.

Heather Wood
Chief Executive, Rainbow Trust Children's Charity

What we do...

Having a child with a life threatening or terminal illness can be a very frightening experience. Rainbow Trust provides expert emotional and practical support for parents and carers who live with the possibility that their child might die before them.

We are the leading charity directly providing support to these vulnerable families and the only organisation that provides support for the whole family, helping them try to find a new 'normal' when their world is in turmoil. Our nine teams of Family Support Workers are available 24 hours a day, from diagnosis, through treatment and, for some, through bereavement. We give families choice and control. They choose which of our services would be most helpful, where and when. Our service is unique and entirely shaped by each family's individual needs.



Family support

Family Support Workers spend time with the **whole family** in their home, providing **whatever** support they may need. This may be listening to family members' fears for the future, spending time with the sick child or helping with practical tasks such as the shopping – small things that make a **big difference** to everyday life.

Sibling support

Our teams of Family and Sibling Support Workers get to know **all the family** and spend time with brothers and sisters to help them understand what's happening. They become **reliable confidantes**, **playmates** and **trusted adults** for siblings who need emotional support and a chance to **have some fun**.



24-Hour helpline

Our **24-hour helpline** is a great comfort for parents who may need to contact their Family Support Worker urgently or just need **someone to talk to**.





Supporting Families through grief and loss

Parents don't expect to outlive their children. Our **bereavement support** can start when a family fears that their child is going to die, rather than after a child dies, as is the case with many other services. We **understand** the grieving process cannot be rushed or ignored and we offer all family members the help they need for **as long as they need it**. Family Support Workers help parents going back to work, will provide support for families on the anniversary of their child's death and can go with them to visit their child's grave if they wish. They will continue to talk about the child and **share memories**.

Providing transport



Families with sick children can face long, draining journeys, often by public transport. Appointments can take full days, involve overnight stays and take one parent away from the rest of the family – often on a regular basis. Our teams help make things easier by driving the family to hospital, so they arrive **less stressed** and **better prepared emotionally**.



Drop-in groups

Our drop-in groups are a **safe, understanding** place where children can play and parents can make friendship bonds. When families are told their child has a life threatening or terminal illness, normal activities can be more difficult. We recognise that families need a **chance to socialise**, share experiences and talk to peers. The groups provide **arts and crafts**, **outdoor play** and the use of **sensory development equipment**.

Supporting Families in hospital



Many of the families we work with spend **long periods** in hospitals, waiting in outpatient clinics or by their child's bedside during prolonged hospital admissions. Our Family Support Workers accompany children and parents to appointments. They help families to **understand test results** and will spend time with the child in hospital, giving parents **time to recharge** their batteries or have a meal.

Outcomes

We constantly strive to improve our services and make sure we support families in a way that they want and need.

This year we completed a pilot family research project to find out what it is that families value the most. They told us that there are five key areas where we make the biggest difference to their lives:

- We improve the family's ability to manage stress
- We maintain parents'/carers' stability and confidence
- We enable families to spend quality time together
- We improve the quality of children and young people's lives
- We enable families to keep communicating through loss and bereavement.



A week in the life of
Rainbow Trust
Children's Charity

1,368
families supported



Monday

Improving a family's ability to manage stress in a world that has been turned upside down

Krismia Katsamba, aged three, was diagnosed with Acute Lymphoblastic Leukaemia in August 2012, an illness which put a lot of pressure and stress on the family.


Frequent visits to hospital became very draining, both emotionally and financially – trains and hospital food were expensive. Noreen, Krismia's mum, had to give up work to care for Krismia, and Ephraim, Krismia's dad, had to take time off to accompany his family to the hospital. The bills soon began to mount up. It was also difficult to find babysitters for their other daughter, Kourtney, aged one. This was a very stressful and frightening time.

🌀🌀 I honestly don't know where we would be without Rainbow Trust; it would have added a lot of stress. Now when we go to hospital it is no longer stressful. 🌀🌀

Noreen Katsamba, Krismia's mum



We have supported the family since January 2013. Tori, their Family Support Worker, drives Noreen, Krismia and Kourtney to hospital, meaning Ephraim can go to work. She is there to listen when the family needs to talk. These may be simple actions but they make a big difference.

482,000 miles driven 
almost the equivalent to
the **MOON**
and back
TWICE!

Including to homes, hospitals, schools and play centres.



Did you know? This year, we grew our network of support services across England, bringing the total number of Family Support Teams to nine and drop-in groups to 11; resulting in 1,368 families benefitting from our services – an increase of 5% on 2011/12.

To do today:

• Send Card to Jane's parents

• Attend Funeral of eight-year-old Mikey

Tuesday

Helping to maintain stability and confidence

Emma was just three years old when she was diagnosed with Acute Myeloid Leukaemia. For the following two years, hospital became home for her, mum Charlie and her dad Kevin. Sadly, Emma died on New Year's Day 2013.



Charlie has told us how lost and empty she felt after Emma's death and the important role Rainbow Trust played in helping her cope. We were able to offer her a 'safety net' that helped her maintain some sort of normality for the rest of the family, including Emma's two older siblings Amy-Louise and Sam.

🧡 You have no idea how important their bereavement support is. That time after the death, life goes on, friends disappear and go back to work. Rainbow Trust is still there, keeping some sort of normality. 🧡

Charlie Smart

After Emma's death, Charlie found it hard to leave the house and often had panic attacks. However, Rainbow Trust's support helped maintain a sense of normality. During the summer holidays Steve would take the children out for breaks whilst Annabel spent time with Charlie. Charlie would leave the house if Annabel was with her. As Steve and Annabel were there throughout Emma's treatment, they knew her well and could share memories of her – something friends and family can sometimes find difficult.

Steve and Annabel still support the family and will continue to do so for as long as they are needed.



Wednesday

To do today:

- ⓐ Take Josh to the funfair - face painting a must!
- ⓑ Look after Chloe while Vicki goes shopping

Enabling quality time between family members



Tilly-May and her family with Bryan

Talking to the Somerville family in Swindon it's clear just how much all members of a family with a sick child need support. Their daughter Tilly-May, aged four, was born with part of her brain missing. She also has cerebral palsy, is blind and needs 24/7 care.

Caring for Tilly-May's needs - particularly when lengthy stays at hospital are required - can put a strain on her siblings, Emily, 17, Ben, 15, and Dylan, 5. Dylan, in particular, doesn't understand why he can't go to hospital with Tilly-May, or why his mum, Jenny, has to stay away for such long periods each time.

“ You get overwhelmed sometimes that an organisation will be so generous and go out of their way and change everything to help you when you are in crisis. ”

Jenny Somerville



Bryan is their Family Support Worker and over time Jenny has seen a strong bond grow between him and Tilly-May. At first she wouldn't leave Tilly-May with anyone at hospital, but Bryan is now one of the few people Jenny trusts with her. Bryan also visits the house and spends time with Tilly-May. This allows Jenny to spend more time with the rest of the family to do fun things together. The value of Tilly-May's family being able to spend quality time with each other cannot be underestimated.

Did you know? We have increased the number of volunteers working alongside Family Support Workers so that more families can receive the support they need.





Thursday

To do today:

- Ⓧ Help Karina with bathing baby Matthew
- Ⓧ Take Robbie to the zoo
- Ⓧ Pick Ewan up from school while Sam is at the hospital

Improving the quality of children and young people's lives

Sebastian made his first trip to a soft-play area. Sabrina, one of our Family Support Workers, took him there so that Danielle, his mum, could be at the hospital with his twin brother, Roman.

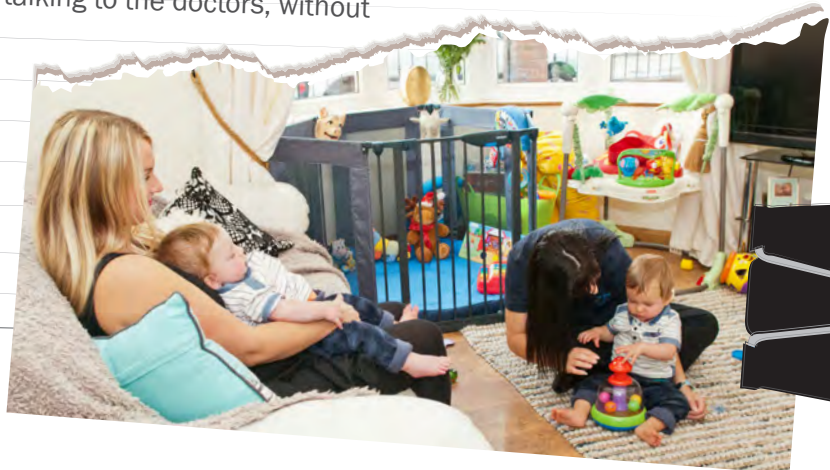
Roman was born without an oesophagus and with his stomach attached to his wind pipe. He also has a hole in his heart, has had to have lots of operations and needs constant care at home.

🌀🌀 Rainbow Trust makes me feel like we've got someone to fall back on. It means I can spend time with Roman without feeling guilty about Sebastian. I would really struggle without them. 🌀🌀

Danielle Maskill



The boys are only 11 months old so still need a lot of attention. For a parent, managing twins can be hard enough, but when one of them is seriously ill and needs constant, dedicated attention it is even harder. Sabrina supports Danielle by taking care of Sebastian on the days when Roman has an appointment. This means that Danielle can spend time caring for Roman and talking to the doctors, without having to worry about Sebastian.



Did you know? By 30 June 2013 we had a total of 43 Family Support Workers providing vital emotional and practical support to 1,368 families.

To do today:

- Give the Marshall Family a call to see how they are doing
- Take the Jones Family a memory box

Friday

Enabling families to keep communicating through loss and bereavement



Sophie and Georgia
with Marlene

Family Support Workers Liz and Marlene have helped create a precious memory box of Jack for his mum, Sophie and sister, Georgia. It is somewhere to keep a few of Jack's belongings after he died just before his third birthday from chronic lung disease.

Rainbow Trust has been supporting the Doharty family since they were referred to us by the children's community nurses at the hospital. Initially, it was the practical services such as transport and shopping that were most useful, but as Jack's condition deteriorated emotional support became all the more important.

☞☞ After Jack died most of the services that supported me ended. Rainbow Trust carried on supporting me. I wouldn't like to think about how I'd be if they weren't here. I would have been very depressed. ☞☞

Sophie Doharty

Liz and Marlene have become very close to the family – something that has helped all of the family deal with their grief, particularly Sophie, who has told us that without them she would have really struggled to cope.

The memory box isn't yet complete as Sophie's not quite ready to put everything in it. But she's preparing things, including Jack's hand and foot prints, which Liz suggested doing – a lovely keepsake that will help all the family remember him.

Saturday

Where to find the drop-in groups:

- Bereavement art psychotherapy sessions
London
- Specialist sensory experience room
Cumbria
- Resource centre
Southampton
- North East drop-in group
RVI Hospital, Newcastle

Allowing sick children to play in safe environments

Children love to play. What could be more fun than being taken to a big play area with lots of other children and lots of games to take part in?

For children who have a serious illness it can be difficult for them to participate in fun activities because they are much more susceptible to infection.

Rainbow Trust provides regular drop-in groups. Held in safe places they offer many children a rare opportunity to socialise with other children.

Siblings don't miss out either. Our specialist drop-in groups for siblings allow brothers and sisters a chance to be the centre of attention as well as meet other children going through similar experiences.



Sunday

Providing parents with a much-needed support network

For the parents we work with, having people to talk to who are going through a similar situation can make all the difference.

While their children are playing at our drop-in groups, parents can meet each other and share concerns and advice.

This helps them to realise they are not alone in having feelings of anxiety and fear, and provides them with a support network that they cannot get from their friends, who will never know the full extent of what they are going through. It also gives them the chance to take a break from the constant pressure that their child's serious illness or death can put them under.



Did you know? We also hold drop-in groups and Tribute Days for bereaved families so they can remember and celebrate the life of their child.

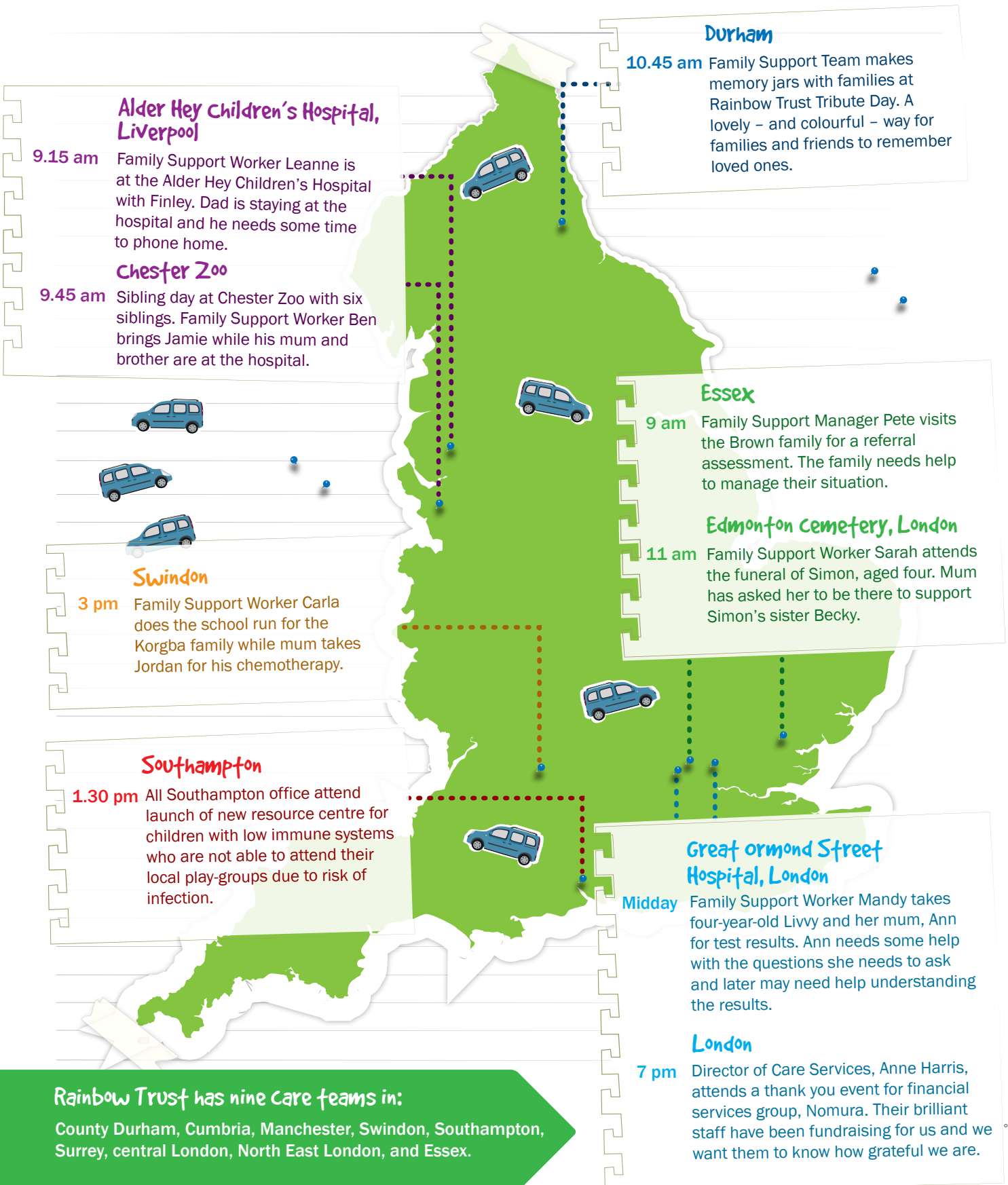
882,000
miles driven by
Family Support Workers



Our Day

Family Support Workers and their vehicles are a lifeline to families whose child is very sick. It costs £7,000 a year to run a vehicle. This covers the cost of travelling to appointments, bringing sick children home from hospital and taking families on fun days out to the zoo, cinema or farm.

In 2012/13 Rainbow Trust Family Support Workers travelled **882,000 miles**, helping **1,368 families**.



Rainbow Trust has nine care teams in:

County Durham, Cumbria, Manchester, Swindon, Southampton, Surrey, central London, North East London, and Essex.

Things we're most proud of

our enhanced service -
extra care to help
brothers and sisters cope

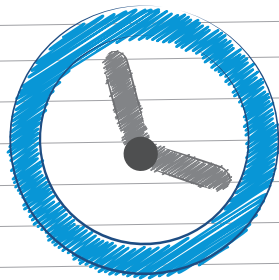
Sibling Support



When a child is diagnosed with a life threatening or illness siblings can often find themselves in the role of having to deal with extraordinary and challenging circumstances. Young carers can miss out on opportunities that other teenagers take for granted. We were therefore thrilled when the Big Lottery Fund agreed to part fund our new Sibling Support Service, Me Too!, enabling us to enhance our service with dedicated Sibling Support Workers. This will improve the lives of sibling young carers to education, training and development help reduce the long-term emotional impact of growing up with a seriously ill brother or sister.

Increasing time for
families to be together

Time for Families



Our volunteers work alongside Family Support Workers in a range of roles. They provide a really valuable service in addition to our services and help us make even more of a difference to the families who need us.

*Anne Harris,
Director of Care Services*

In June we opened a new facility for children and families in Southampton, bringing the total number of meeting facilities and groups around the country to including three specifically for siblings. Each of our lifeline for parents caring for a seriously ill child safe environments offer games, activities and development equipment for children while parents relax with a cup of tea and meet other families in a similar situation.



Thanks to the generosity of financial supporters like International Plc and the brilliant staff we were able to open a new and much needed service and the lives of a number of families supported.



Giving siblings the opportunity to relax and talk about the aspects of life that they are not coping with or do not understand can help rebuild their confidence and reassure them it's ok to have fun again.

Claire Warrender, Sibling Support Worker

We have built on this throughout the year

Volunteers in Care Scheme



We are working hard to build on the success of last year's Volunteers in Care pilot to expand the team of volunteers who kindly dedicate their time to helping others and assist our Family Support Workers.



Parents are the best therapy I've found. They don't judge; they are your friends. They have been my inspiration and biggest support.

Debbie, whose son has Down's Syndrome and Leukaemia

Reaching more families that need us

Central London Team Launch



Fundraising and marketing overview

All the vital services that Rainbow Trust provides to families would not be possible without the amazing support and commitment of our army of volunteers, corporate partners, school and community groups, donors, Patrons, event participants, people buying Christmas cards and crackers, and our wonderful shop customers. Without you we simply would not continue to exist.

This year we increased our fundraising income by £292,000, 8% more than in 2011-12. With your support we can help more and more families who are coping with the stress of caring for a terminally ill child. Thank you.

☺☺ I was welcomed like I was the first volunteer they had ever had. They were absolutely brilliant. ☺☺
Tracey, Fundraising Volunteer

To do:
Thank all the amazing volunteers for 30,253 hours of support!

That is the equivalent of 18 working years!



Our Highlights

Events

It was a great year for our fundraising events. TV presenter Clare Balding joined us for our sell-out Christmas Carol Concert at the stunning St Knightsbridge, London. Hard-working committee helped us raise £67,500 at our glamorous Trust beautiful grounds of Syon Park once again offered when we were the benefitting charity for the prestigious Salon Privé, and we were also very proud to be incredible Swapsball, which raised over £

Sports

Our runners raised an incredible £551,000 this year from a wide range of events all over the country; from short runs to the 26.2 miles of the Brighton and Virgin London marathons. Cyclists pedalled their way record-breaking £46,926 and more supporters than took to the skies to raise money with a skydive.

Trusts and Foundations

In 2012/13 we received grants from Oak Foundation, and BB continued to show their commitment a Family Support Worker in Manchester receive three-year part-funding from the new Me Too! Sibling Support Service provide dedicated emotional, social brothers and sisters of terminally ill children receive valuable support from the Jam Ingram Trust and The Zochonis

hts

London
Paul's Church in
ees and supporters
in Fashion show, and
r Night's Soiree. The
us some va-va-voom
gious super car event,
benefit from the
£136,000.

nd
to a
ever

donations

generous donations
BC Children in Need
nt when they part-funded
er. We were also delighted to
e Big Lottery Fund to launch
ice, which will enable us to
and practical support for
ldren. We also continued to
nes Tudor Foundation, The
s Charitable Trust.

Individuals and Community

This year thousands of donors made regular gifts and supported our appeals. Throughout the year many of the families we help shared their stories so that supporters could hear first hand about the difference their donations make. Many of our supporters also went to huge lengths to raise money for us, including: old school friends Daina Martin and Colette Henderson, who cycled from London to Bath, raising over £6,000; and the adventurous Alex Boardman, who walked over 2,000 miles of the Appalachian Trail, USA in five months. We launched Forever There Tribute Funds and received £184,000 in legacies – a vital source of income. We also opened the doors to two new Rainbow Trust shops, featuring our exclusive 'Designers at Rainbow' brand. The high street shops in Leatherhead and Cheam specialise in designer and high-end clothing donated by our very generous corporate and individual supporters.

Corporate partners

We are very proud of all the support we receive from companies large and small from all over the country. This year Lusso Homes, DHL and Bird & Bird LLP continued their support for our work and I Love Claims completed a torch relay around the UK, raising in excess of £61,400. eBay customers raised over £15,000 with celebrity auctions, sales and donations at the checkout. We welcomed new corporate partners Frankie & Benny's and World Duty Free Group as we said goodbye after a two-year partnership to financial services group, Nomura International Plc. The commitment and enthusiasm of all their amazing staff raised a staggering £540,000, which funded a new team of Family Support Workers in central London.



BGC Charity Day
Comedian and actor Steve Coogan joined five-year-old Iris on the trading floor at BGC Partners, where they sealed some deals and raised £50,000.



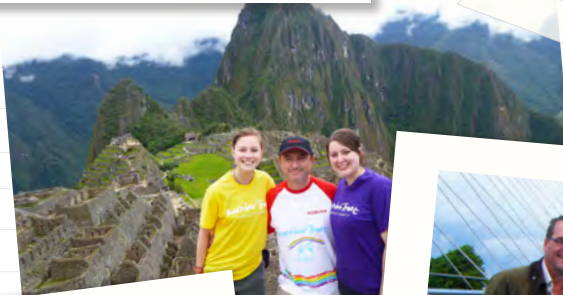
Van Morrison concert
The legendary Van Morrison treated supporters to a fantastic concert in London, raising £59,500.



Rainbow Day
We raised eyebrows as hundreds of people joined Britain and Ireland's Next Top Model Letitia Herod to show their colours on our first ever Rainbow Day.

A year in fundraising

Thank you to everyone for your support over the last 12 months. It was a very busy year and lots of fun was had along the way, as our photos here show!



The Big Hour
Tadworth Primary School joined in, along with children and families across the country, using the extra hour when the clocks went back to bake and sell cakes. Sponsored by GR Wright & Sons Ltd, this fantastic event raised £25,000.

The 1,800km Challenge
Susan Binnersley dropped three dress sizes to cycle, run, swim, row and cross train over an epic 1,800km challenge to mark what would have been her son's 18th birthday.

Design a Christmas card competition winner

Nine-year-old Amy Beney from Surrey beat stiff competition to be crowned the winner of Rainbow Trust's annual Design a Christmas Card competition.



Midsummer Night's Soiree

Guests raised £136,000 while enjoying fun, merriment and a Shakespearian feast at the Underglobe at Swan, Shakespeare's Globe Theatre in London.



Nuts Challenge

Some 60 people, including our very own Sports and Challenges Manager, Anna Thomas, braved a gruelling 7km army assault course, complete with cargo nets, tunnels and muddy pits.



Trust in Fashion

Champagne flowed and glamour was the order of the day at our special fashion show, hosted by ITV broadcaster Mary Nightingale and *Marie Claire* editor and Rainbow Trust Patron, Trish Halpin.



No mountain too high

No matter where, no matter how far, DHL Express donated over £6,000 worth of free deliveries and collections whilst staff joined together to raise even more money.



Isla's Fund

Kelly Holliday launched Isla's Fund in memory of her daughter, who died aged four in November 2012. Friends and family danced, walked and ran, raising £14,000 so far.



Celebrity quizzers

Rugby legend and Patron, Austin Healey took to the famous black chair in *Celebrity Mastermind* whilst *Made in Chelsea* star Hugo Taylor was in the hotseat in *Who Wants to be a Millionaire?*







Our future goals

Families shouldn't have to cope on their own at their time of most need. Our vision is for all families who have a child with a life threatening or terminal illness to have access to a Rainbow Trust carer. We have increased the number of families we reach, but there are still many, many more who need our help.

We know that we have challenging years ahead and that our vision will not be possible without the help and generosity of each and every one of our supporters.

To support every family who faces caring for a life threatened or terminally ill child, we are committed to

- Increase the number of Family Support Workers in all teams to six
- Research potential partners and funding for a new Family Support Team
- Explore opportunities to extend care to families in neo-natal units.

To increase the high-quality, tailored support we provide to families, we aim to

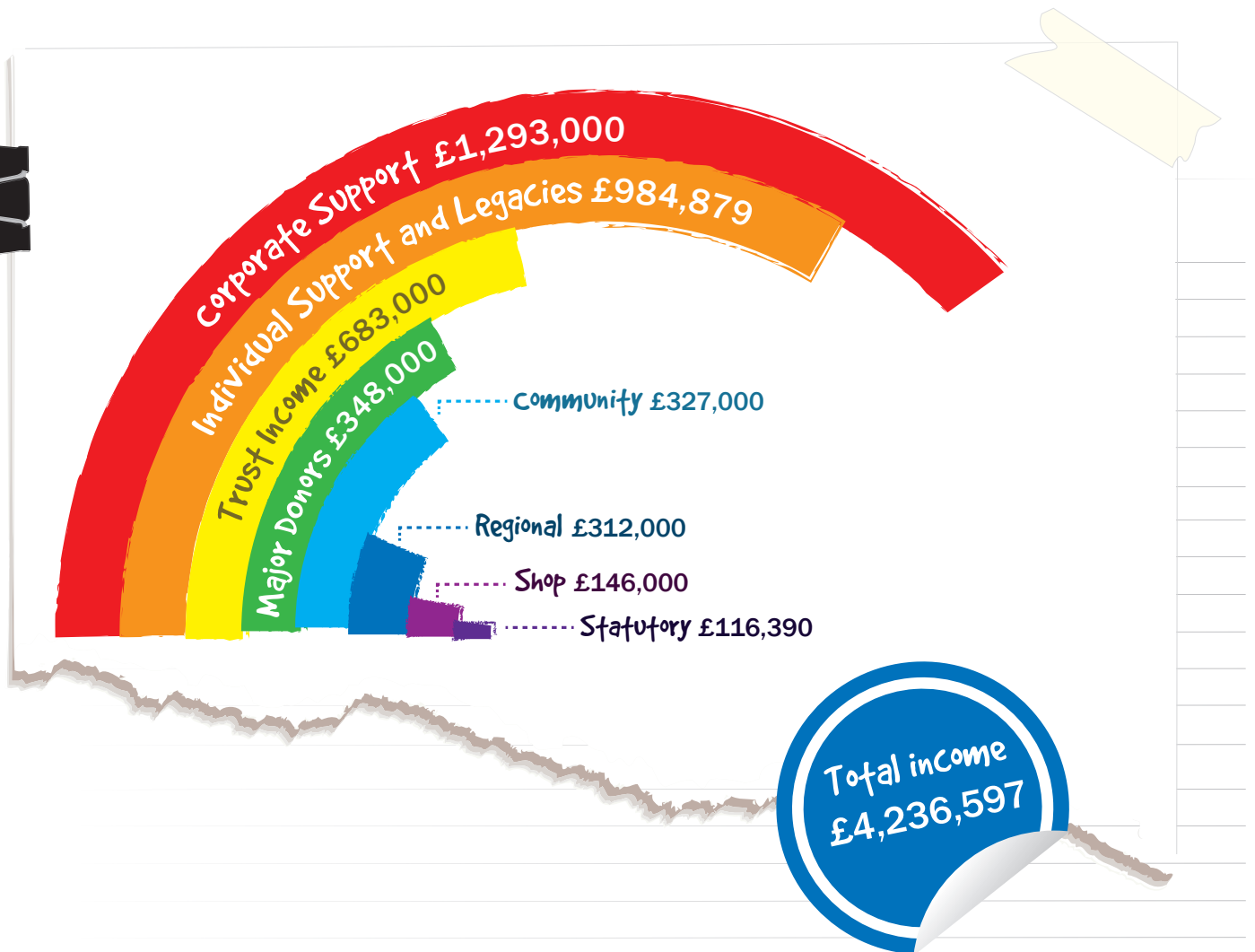
- Grow the profile of our Sibling Support Service so more families know it is available
- Offer more online services for families and professionals that are interactive, 24-hour and easy to access
- Inspire more volunteers to work with us, particularly to work with families.

To improve children's social palliative care through our leadership, we pledge to

- Explore emerging trends and ideas that will improve the lives of families caring for a life threatened or terminally ill child
- Build on our track record for service innovation, grassroots knowledge and creativity
- Increase the profile and understanding of our model for social care and the needs of the families we support.



How we raised our money in 2012/13



And how we spent it:

We work hard to make sure we achieve as much as possible with the charity funds we receive. You'd be surprised about just how far your donations can go. For instance, **£22** provides a family with a terminally ill child an hour of vital support. With **£80**, we can provide a session of hospital support to help families cope with the emotional and logistical pressures when attending hospital visits.



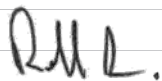
Income and expenditure

Summarised accounts

Statement of Financial Activities for the year ended 30 June 2013

Income	2012/13	2011/12
Fundraising Income:		
Grants and donations	£2,126,424	£3,061,827
Legacies	£183,913	£60,420
Fundraising events and commercial activities	£1,783,542	£679,847
Statutory income	£116,390	£187,005
Investment income	£26,328	£30,752
TOTAL INCOME	£4,236,597	£4,019,851
Expenditure		
Care services to families	£2,691,076	£2,843,718
Fundraising costs:		
Generating fundraising income	£796,165	£977,738
Fundraising events and commercial activities	£726,542	£368,174
Donor acquisition	£1,199	£83,484
Governance costs	£20,664	£15,915
TOTAL EXPENDITURE	£4,235,646	£4,289,029
Net incoming (outgoing) resources before transfers	£951	(£269,178)

This is an overview of our income and expenditure in 2012/13. It's taken from our audited Annual report and accounts, which you can request from us, by calling 01372 363438 or emailing info@rainbowtrust.org.uk



Rob Deri, Finance Director on behalf of the Board of Trustees

A BIG thank you

To all our supporters who helped us provide vital support to families with a seriously ill child in 2012/13. One day, every family in the UK caring for a child with a life threatening or terminal illness will have access to a Rainbow Trust carer.

Companies

1st Credit
Alison Cooper Graphic Design
APB Club
Ascot Underwriting
Atomic London
Barracudas
Barts Choir
BGC Partners
Bird & Bird LLP
Blue Rubicon
BMI Publications Ltd
Boodles
Café Rouge
Cargill PLC
Contiki Travel (UK) Ltd
Copart UK
Cracker Drinks
Crashworth
DHL Express
eBay for Charity
Enterprise Rent A Car UK Ltd
Frankie & Benny's
GCS Recruitment
Genuine Solutions Group
Giveacar
Google
Goldman Sachs International
GR Wright & Sons Ltd
Hanover Dairies
Harper Collins
Haygarth Group Ltd
I Love Claims
Integreon
K2 Corporate Moving Systems
Lucid Events
Lusso Homes
Lyons Davidson

M&G Investments
Major Players
Marex Spectron
Mary Kay Cosmetics (UK) Ltd
Matches
Metro Group
MNOPF Group
Morgan McKinley
News International
Nomura International Plc
Paperchase
Party Pieces
Pennies from Heaven
PM Society
PP O'Connor Ltd
QBE Insurance Group
Results International
Sacramento Events
Salon Privé
Schroders
Sainsbury's, Cobham
Siemens
Storm Model Management Ltd
Sun FM
TLC Marketing UK
UK Recycling Assistance
UNUM Limited
VSG Security
Waltons and Morse LLP
Waterstones
World Duty Free Group

Patrons

Sir Hugh Blackett
Sue Cook
Annabel Croft
Ashley Davies
The Hon Mrs James Dawnay
Lady Fellowes of West Stafford
Lord Fellowes of West Stafford
Lady Glover
Jack Gratton
Trish Halpin
Austin Healey
Michael Howard
Mrs Andrew Lukas
Aled Miles
Mary Nightingale
Pauline Obee MBE
The Countess of Perth
Lord Redesdale
Lady Robson
Mrs Robert Ropner DL
Mrs James Russell
Mrs Ben Sangster
Mrs John Salkeld
John Scott
Simon Smith
Alan Stevenson
Alan Titchmarsh MBE DL
Zac Toumazis
Mrs Peter Vey
Kevin Whitfield
Mary Wynne-Finch





Thank you!

Grants and Foundations

BBC Children In Need
Big Lottery Fund
Caron Keating Foundation
Community Foundation for Surrey's Hamilton Fund
Garfield Weston Foundation
James Tudor Foundation
John Horniman's Children's Trust
London Stock Exchange Group Foundation
Oak Foundation
Santander Community Plus
Sir John Fisher Foundation
The Edwina Mountbatten and Leonora Children's Foundation
The Herbert and Peter Blagrove Charitable Trust
The Ingram Trust
The Monument Trust
The Steel Charitable Trust
The Taurus Foundation
The Taylor Family Foundation
The Valentine Charitable Trust
The Zochonis Charitable Trust

President

The Hon Richard Stanley

Trustees

Gordon Tempest-Hay (Chairman)
Tim Bunting
Mark Cunningham
Geraldine Peacock CBE
Dr Jonathan Rabbs
Mark Richardson
Fiona Smith
Michael Wainwright
Mrs Celia Woollett

Committees and Friends

Hampshire Friends
Surrey Friends
Essex Friends and Harold Wood Shop
Upminster Friends
The Midsummer Night's Soiree Committee
The London Carol Concert Committee
The Swapsball Committee



**Rainbow Trust children's charity
provides emotional and practical support
to families who have a child with a life
threatening or terminal illness.**

Contact Details:

Head Office

6 Cleeve Court, Cleeve Road
Leatherhead, Surrey KT22 7UD
T: 01372 363438
E: enquiries@rainbowtrust.org.uk

North East Office

Forster House, Forster Business Centre
Finchale Road, Newton Hall, Durham DH1 5HL
T: 0191 386 4400
E: holly.jenkins@rainbowtrust.org.uk

North West Office

Chambers Business Centre
Chapel Road, Hollinwood, Oldham OL8 4QQ
T: 0161 633 4684
E: fundraisingNW@rainbowtrust.org.uk

rainbowtrust.org.uk

 [facebook.com/RainbowTrust](https://www.facebook.com/RainbowTrust)

 twitter.com/RainbowTrustCC

Editors: Slack Communications,
Rainbow Trust Children's Charity
Design: Rainbow Trust Children's Charity
Photography: Andy Newbold, Dean
Gear, Mark Lewis, Peter Ashby-Hayter,
Greg James, Debbie Stodgen

Special thanks to the children and
families featured and photographed in
this Impact Report who are, or have
been, supported by Rainbow Trust
Children's Charity.



Registered Charity No. 1070532.

Company limited by guarantee. Registered in England No. 3585123.